



Madison, Wisconsin

# CITY OF MADISON

## CITY ENGINEERING DIVISION

### DEPARTMENT OF PUBLIC WORKS

# PLAN OF PROPOSED IMPROVEMENT

PUBLIC IMPROVEMENT PROJECT APPROVED

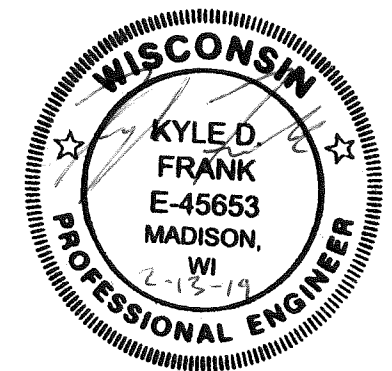
JANUARY 8, 2019

BY THE COMMON COUNCIL OF MADISON, WISCONSIN

PUBLIC IMPROVEMENT DESIGN APPROVED BY:

*[Signature]* 2/14/19  
 City Engineer Date

SANITARY SEWER DESIGNED BY:



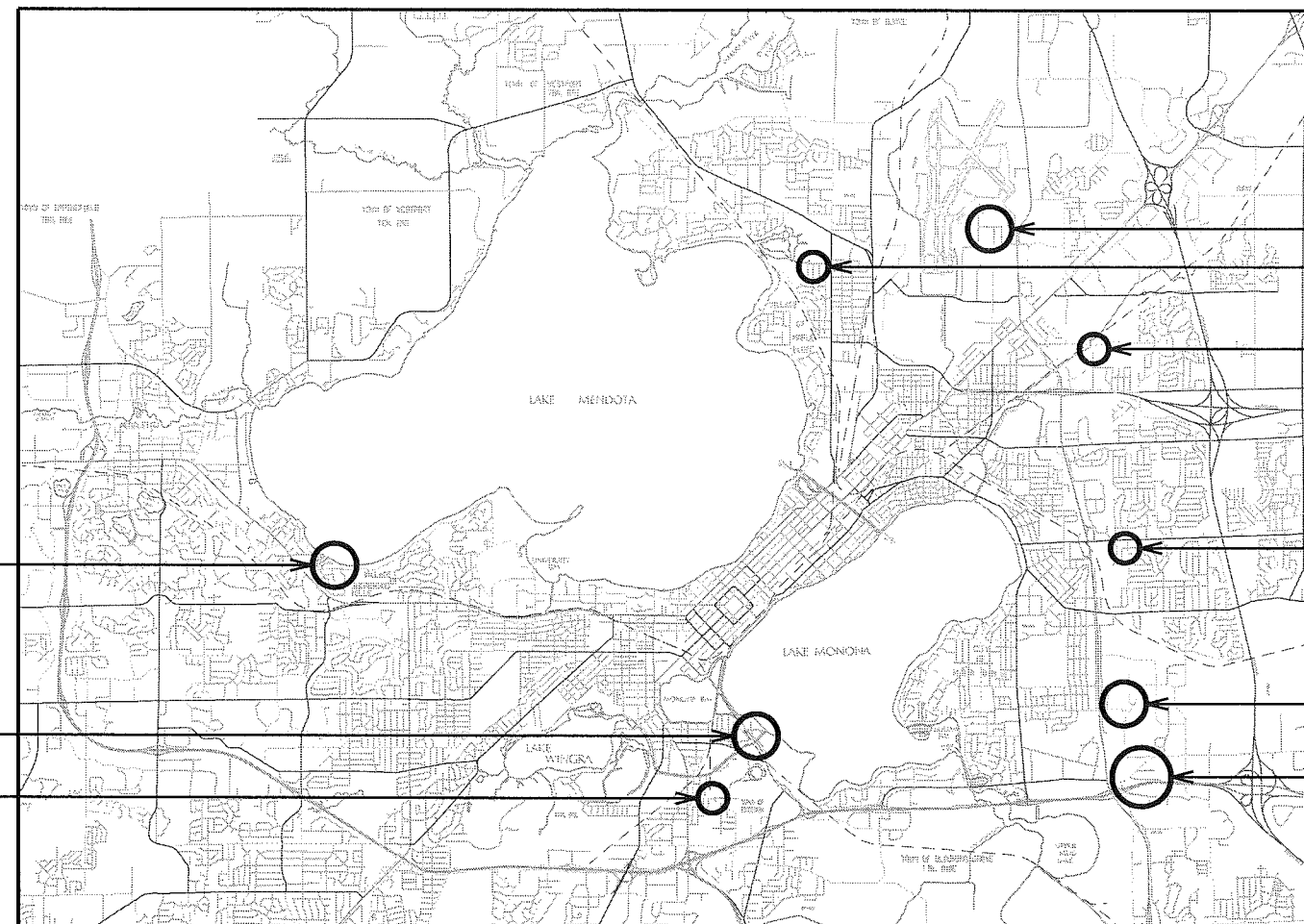
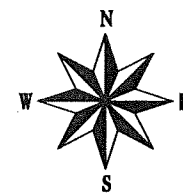
INDEX OF SHEETS

SHEET NO.	TITLE
1	DETAILED LINING LIMITS
D1	LAKE MENDOTA DR PLANS
P1-P2	SPRING CT PLANS
P3	SAYLE ST PLANS
P4	OLIN TURVILLE CT PLANS
P5	E. BROADWAY & DUTCH MILL RD AREA PLANS
P6-P12	ADVANCE RD & TOMPKINS DR & PROGRESS DR PLANS
P13-P14	FERRIS AVE PLANS
P15	WALSH RD PLANS
P16	BRENTWOOD PKWY PLANS
P17	AIR NATIONAL GUARD PEARSON ST PLANS
P18	AIR NATIONAL GUARD MITCHELL ST PLANS
P19	BRAM ST PLANS
P20	

## CIPP WET LINING REHAB OF SANITARY SEWERS - 2019

CITY PROJECT NO. 12264

CITY CONTRACT NO. 8390



SHEET P1-P3

SHEET P4-P5

SHEET P20

SHEET P18-P19  
 SHEET P17

SHEET P16

SHEET P15

SHEET P13-P14

SHEET P6-P12

PLOT SCALE:

PLOT NAME:

REV. DATE:

ORIGINATOR: CITY OF MADISON, STREETS DIVISION

FILE NAME:

DATE: 2/8/2019

# DETAILED LINING LIMITS

LOCATION	U.S. STRUCT.	D.S. STRUCT.	DIA (IN)	LENGTH (LF)	MATERIAL	LATERALS	SHEET
LAKE MENDOTA DR, BACKYARD	SAS 3547-001	SAS 3547-002	6	75	VP	0	P-1
LAKE MENDOTA DR, BACKYARD	SAS 3547-002	SAS 3547-003	8	339	CI / VP	3	P-1
LAKE MENDOTA DR, BACKYARD	SAS 3547-003	SAS 3547-005	8	118	VP	1	P-1
LAKE MENDOTA DR, BACKYARD	SAS 3547-005	SAS 3547-006	8	86	VP	3	P-1
LAKE MENDOTA DR, BACKYARD	SAS 3547-006	SAS 3447-028	8	127	VP	2	P-1
LAKE MENDOTA DR, BACKYARD	SAS 3447-024	SAS 3447-025	8	152	CI	0	P-1
LAKE MENDOTA DR, BACKYARD	SAS 3447-025	SAS 3447-028	8	98	VP	2	P-1
LAKE MENDOTA DR, BACKYARD	SAS 3447-008	SAS 3447-006	8	16	VP	0	P-1
LAKE MENDOTA DR, BACKYARD	SAS 3447-007	SAS 3447-006	6	154	VP	1	P-1
LAKE MENDOTA DR, BACKYARD	SAS 3447-009	SAS 3447-006	6	150	VP	1	P-1
LAKE MENDOTA DR, BACKYARD	SAS 3447-006	SAS 3447-005	6	70	VP	0	P-1
LAKE MENDOTA DR, BACKYARD	SAS 3447-005	SAS 3447-004	8	236	CI	2	P-1
LAKE MENDOTA DR, BACKYARD	SAS 3447-004	SAS 3447-003	8	91	CI	0	P-1
LAKE MENDOTA DR, BACKYARD	SAS 3447-010	SAS 3447-011	6	164	VP	3	P-1
LAKE MENDOTA DR, BACKYARD	SAS 3447-011	SAS 3447-026	6	127	VP	2	P-1
LAKE MENDOTA DR, BACKYARD	SAS 3447-026	SAS 3447-027	6	47	CI	0	P-1
LAKE MENDOTA DR, BACKYARD	SAS 3447-027	SAS 3447-003	6	55	CI	0	P-1
LAKE MENDOTA DR, 3100	SAS 3844-001	COM LS #7	8	300	VP	0	P-2
SPRING CT	SAS 3347-014	SAS 3347-013	8	165	VP	2	P-3
SPRING CT	SAS 3447-013	SAS 3447-002	8	148	VP	0	P-3
SPRING CT, BACKYARD	SAS 3447-002	SAS 3447-005	8	385	CI	8	P-3
SPRING CT, BACKYARD	SAS 3447-005	SAS 3347-004	8	189	CI	4	P-3
LAKE MENDOTA DR, BACKYARD	SAS 3347-008	SAS 3347-014	6	270	CI	3	P-3
LAKE MENDOTA DR, BACKYARD	SAS 3347-013	MH05-402	6	14	CI	0	P-3
SAYLE ST	SAS 5157-003	SAS 5157-020	15	246	VP	1	P-4
SAYLE ST	SAS 5157-020	SAS 5158-007	15	246	VP	1	P-4
SAYLE ST	SAS 5158-007	SAS 5158-006	15	247	VP	0	P-4
SAYLE ST	SAS 5158-006	MSD MH04-103	15	90	CI	0	P-4
OLIN TURVILLE CT	SAS 5258-006	SAS 5258-005	10	114	VP	0	P-5
OLIN TURVILLE CT	SAS 5258-005	SAS 5258-004	10	219	VP	0	P-5
OLIN TURVILLE CT	SAS 5258-004	SAS 5258-003	10	198	VP	0	P-5
OLIN TURVILLE CT	SAS 5258-003	SAS 5258-001	12	107	VP	0	P-5
OLIN TURVILLE CT	SAS 5258-002	SAS 5258-001	10	35	VP	0	P-5
FEMRITE DR	SAS 6959-004	SAS 6959-003	8	300	VP	5	P-6
FEMRITE DR	SAS 6959-003	SAS 6959-002	8	300	VP	4	P-6
FEMRITE DR	SAS 6959-002	SAS 6959-001	8	300	VP	5	P-6
FEMRITE DR	SAS 6959-001	SAS 6859-006	8	267	VP	2	P-6
FEMRITE DR	SAS 6859-006	SAS 6859-007	8	43	VP	0	P-6
FEMRITE DR	SAS 6859-007	SAS 6859-008	8	274	VP	5	P-6
FEMRITE DR	SAS 6859-008	SAS 6859-009	8	250	VP	6	P-6
FEMRITE DR	SAS 6859-001	SAS 6859-002	8	290	VP	2	P-6
FEMRITE DR	SAS 6859-002	SAS 6859-003	8	300	VP	1	P-6
FEMRITE DR	SAS 6859-003	SAS 6859-004	8	300	VP	2	P-7
FEMRITE DR	SAS 6859-004	SAS 6859-005	8	300	VP	5	P-7
FEMRITE DR	SAS 6859-005	SAS 6759-001	8	300	VP	7	P-7
FEMRITE DR	SAS 6759-001	SAS 6759-002	8	300	VP	3	P-7
FEMRITE DR	SAS 6759-002	MSD MH07-308	8	206	VP	2	P-7
BROADWAY, E.	SAS 6860-008	SAS 6860-009	8	280	VP	0	P-10
BROADWAY, E.	SAS 6860-009	SAS 6860-010	8	320	VP	3	P-10
BROADWAY, E.	SAS 6860-010	SAS 6860-011	8	300	VP	2	P-9
BROADWAY, E.	SAS 6860-011	SAS 6860-012	8	320	VP	1	P-9
BROADWAY, E.	SAS 6760-001	SAS 6860-012	8	160	VP	0	P-9
BROADWAY, E.	SAS 6860-012	SAS 6860-013	10	54	VP	0	P-9
BROADWAY, E.	SAS 6860-013	MIS 6861-002	12	200	DI	0	P-10
USH 12 & 18 - BELTLINE HWY	MIS 6861-002	SAS 6861-001	12	297	DI	0	P-10
DUTCH MILL RD	SAS 6760-008	SAS 6760-007	8	159	VP	1	P-9
DUTCH MILL RD	SAS 6760-007	SAS 6760-006	8	125	VP	1	P-9
DUTCH MILL RD	SAS 6760-006	SAS 6760-005	8	46	VP	0	P-9
DUTCH MILL RD	SAS 6760-005	SAS 6760-004	8	191	VP	0	P-9
DUTCH MILL RD	SAS 6760-004	SAS 6760-003	8	225	VP	1	P-9
DUTCH MILL RD	SAS 6760-003	SAS 6860-003	8	225	VP	0	P-9
DUTCH MILL RD	SAS 6859-011	SAS 6859-012	8	234	VP	4	P-8

LOCATION	U.S. STRUCT.	D.S. STRUCT.	DIA (IN)	LENGTH (LF)	MATERIAL	LATERALS	SHEET
DUTCH MILL RD	SAS 6859-012	SAS 6860-002	8	252	VP	1	P-8
DUTCH MILL RD	SAS 6860-002	SAS 6860-003	8	198	VP	0	P-9
DUTCH MILL RD	SAS 6860-003	SAS 6860-004	8	95	VP	0	P-9
DUTCH MILL RD	SAS 6859-009	SAS 6859-010	8	282	VP	2	P-8
DUTCH MILL RD	SAS 6859-010	SAS 6860-001	8	284	VP	0	P-8
DUTCH MILL RD	SAS 6860-001	SAS 6860-004	8	278	VP	1	P-9
DUTCH MILL RD	SAS 6760-002	SAS 6860-004	8	213	VP	0	P-9
ELLESTAD DR	SAS 6860-007	SAS 6860-006	8	311	VP	5	P-8
ELLESTAD DR	SAS 6860-006	SAS 6860-005	8	311	VP	4	P-8
ELLESTAD DR	SAS 6860-005	SAS 6860-004	8	311	VP	5	P-9
DUTCH MILL RD	SAS 6860-004	SAS 6860-014	10	240	VP	0	P-9
DUTCH MILL RD	SAS 6860-014	SAS 6860-012	10	200	VP	1	P-9
BROADWAY SERVICE RD	SAS 6760-009	SAS 6660-001	8	300	VP	0	P-11
BROADWAY SERVICE RD	SAS 6660-001	SAS 6660-002	8	80	VP	0	P-11
BROADWAY SERVICE RD	SAS 6660-002	SAS 6660-003	8	98	VP	0	P-11
BROADWAY SERVICE RD	SAS 6660-003	MSD MH07-306	8	220	VP	1	P-11
COLLINS CT	SAS 6761-003	SAS 6761-004	8	145	VP	2	P-12
USH 12 & 18 - BELTLINE HWY	SAS 6761-004	SAS 6761-005	8	412	DI	0	P-12
DUTCH MILL RD, S.	SAS 6761-005	MSDMH07-220	8	275	VP	0	P-12
ADVANCE RD	SAS 6755-003	SAS 6755-002	8	345	VP	5	P-14
ADVANCE RD	SAS 6755-001	SAS 6756-009	8	128	VP	1	P-13
ADVANCE RD	SAS 6756-009	SAS 6756-008	8	123	VP	1	P-13
ADVANCE RD	SAS 6756-008	SAS 6756-007	8	148	VP	0	P-13
TOMPKINS DR	SAS 6656-013	SAS 6756-001	8	328	VP	0	P-13
TOMPKINS DR	SAS 6756-001	SAS 6756-002	10	400	VP	5	P-13
TOMPKINS DR	SAS 6756-002	SAS6756-003	10	230	VP	2	P-13
TOMPKINS DR	SAS 6756-003	SAS 6756-004	10	250	AC	1	P-13
PROGRESS DR	SAS 6756-004	SAS 6756-006	10	230	AC	2	P-13
PROGRESS DR	SAS 6756-005	SAS 6756-004	8	155	VP	1	P-13
PROGRESS DR	SAS 6756-006	SAS 6756-007	10	230	VP	2	P-13
PROGRESS DR	SAS 6756-007	SAS 6755-004	10	355	VP	2	P-14
FERRIS AVE	SAS 6746-007	SAS 6746-008	8	300	VP	5	P-15
WALSH RD	SAS 6634-002	SAS 6634-003	12	293	VP	4	P-16
WALSH RD	SAS 6634-003	SAS 6634-004	12	280	VP	1	P-16
WALSH RD	SAS 6634-005	SAS 6634-004	10	266	VP	1	P-16
WALSH RD	SAS 6634-004	SAS 6634-006	12	256	VP	2	P-16
BRENTWOOD PKWY	SAS 5429-017	SAS 5429-005	8	301	VP	4	P-17
A.N.G. - PEARSON ST	SAS 6027-005	SAS 6027-004	8	212	VP	0	P-18
A.N.G. - PEARSON ST	SAS 6027-004	SAS 6027-002	8	95	VP	0	P-18
A.N.G. - PEARSON ST	SAS 6027-002	SAS 6027-001	8	287	VP	1	P-18
A.N.G. - PEARSON ST	SAS 6027-001	SAS 6127-013	8	171	VP	0	P-18
A.N.G. - PEARSON ST	SAS 6127-013	SAS 6127-012	8	130	CI	1	P-18
A.N.G. - SLOAN BLVD	SAS 6127-012	SAS 6127-011	8	175	CI	1	P-18
A.N.G. - SLOAN BLVD	SAS 6127-011	SAS 6127-010	8	205	CI	1	P-18
A.N.G. - SLOAN BLVD	SAS 6127-010	SAS 6127-008	8	105	CI	0	P-18
A.N.G. - MITCHELL ST	SAS 6126-022	SAS 6126-021	8	152	VP	0	P-19
A.N.G. - MITCHELL ST	SAS 6126-021	SAS 6126-019	8	208	VP	0	P-19
A.N.G. - MITCHELL ST	SAS 6126-019	SAS 6126-018	8	84	VP	0	P-19
A.N.G. - MITCHELL ST	SAS 6126-018	SAS 6126-013	8	111	VP	0	P-19
A.N.G. - MITCHELL ST	SAS 6126-017	SAS 6126-013	6	236	CI	1	P-19
A.N.G. - MITCHELL ST	SAS 6126-013	SAS 6126-012	8	28	VP	0	P-19
A.N.G. - MITCHELL ST	SAS 6126-016	SAS 6126-014	8	137	VP	0	P-19
A.N.G. - MITCHELL ST	SAS 6126-014	SAS 6126-012	8	187	VP	1	P-19
A.N.G. - MITCHELL ST	SAS 6126-012	SAS 6126-011	8	177	VP	0	P-19
A.N.G. - MITCHELL ST	SAS 6126-011	SAS 6126-008	8	107	VP	0	P-19
A.N.G. - SLOAN BLVD	SAS 6126-009	SAS 6126-008	8	202	VP	0	P-19
A.N.G. - SLOAN BLVD	SAS 6126-008	SAS 6127-002	8	352	VP	1	P-19
BRAM ST	SAS 5062-001	SAS 4962-024	8	89	VP	0	P-20

PLOT SCALE:

PLOT NAME:

REV. DATE:

ORIGINATOR: CITY OF MADISON, STREETS DIVISION





PLOT SCALE:

PLOT NAME:

REV. DATE:

ORIGINATOR: CITY OF MADISON, STREETS DIVISION

**LEGEND**

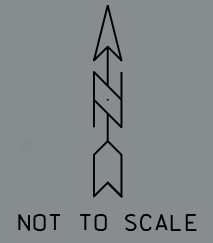
PROP. CIPP MAINS ———

EX. SANITARY SEWER — SAN —

SANITARY ACCESS STRUCTURE ○ ●

NOTE: AERIAL PHOTO AND LATERAL LOCATIONS ARE SHOWN FOR REFERENCE ONLY. CONTRACTOR SHALL BE RESPONSIBLE FOR CONFIRMING ACTIVE LATERAL LOCATIONS FOR REINSTATEMENT.





LAKE MENDOTA

PLOT SCALE:

PLOT NAME:

REV. DATE:

ORIGINATOR: CITY OF MADISON, STREETS DIVISION



CITY OF MADISON  
COMMODORE LIFT STATION  
LS. 7  
3102 LAKE MENDOTA DRIVE

SAS 3844-001  
300'-8" VP 1968

1440'-6" FM CI 1968  
SAN

UWM 3945-001  
SAN

UW 8" SAN  
SAN

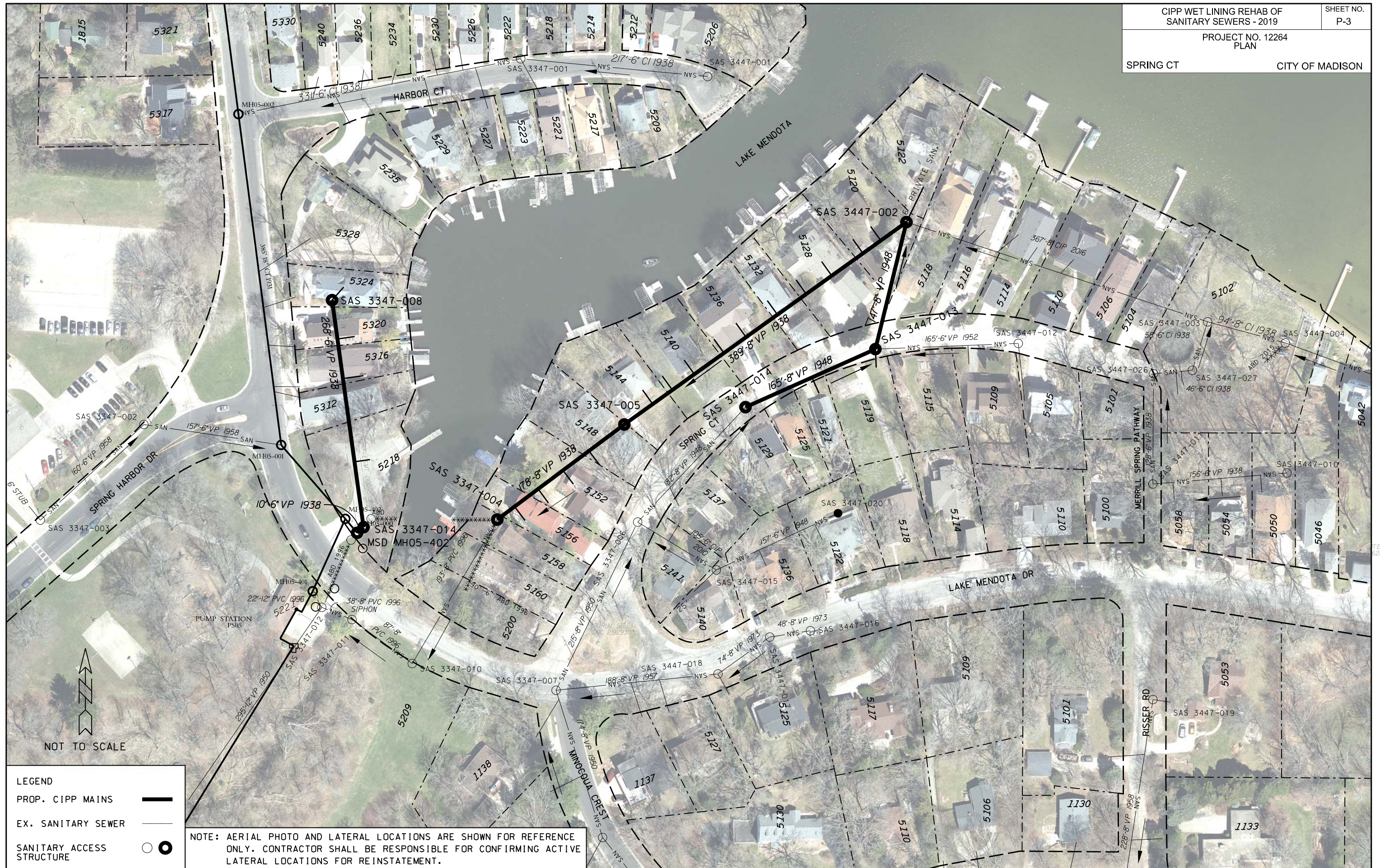
Eagle Heights 505-509

**LEGEND**

PROP. CIPP MAINS	—
EX. SANITARY SEWER	— SAN —
SANITARY ACCESS STRUCTURE	○ ●

NOTE: AERIAL PHOTO AND LATERAL LOCATIONS ARE SHOWN FOR REFERENCE ONLY. CONTRACTOR SHALL BE RESPONSIBLE FOR CONFIRMING ACTIVE LATERAL LOCATIONS FOR REINSTATEMENT.





PLOT SCALE:

PLOT NAME:

REV. DATE:

ORIGINATOR: CITY OF MADISON, STREETS DIVISION

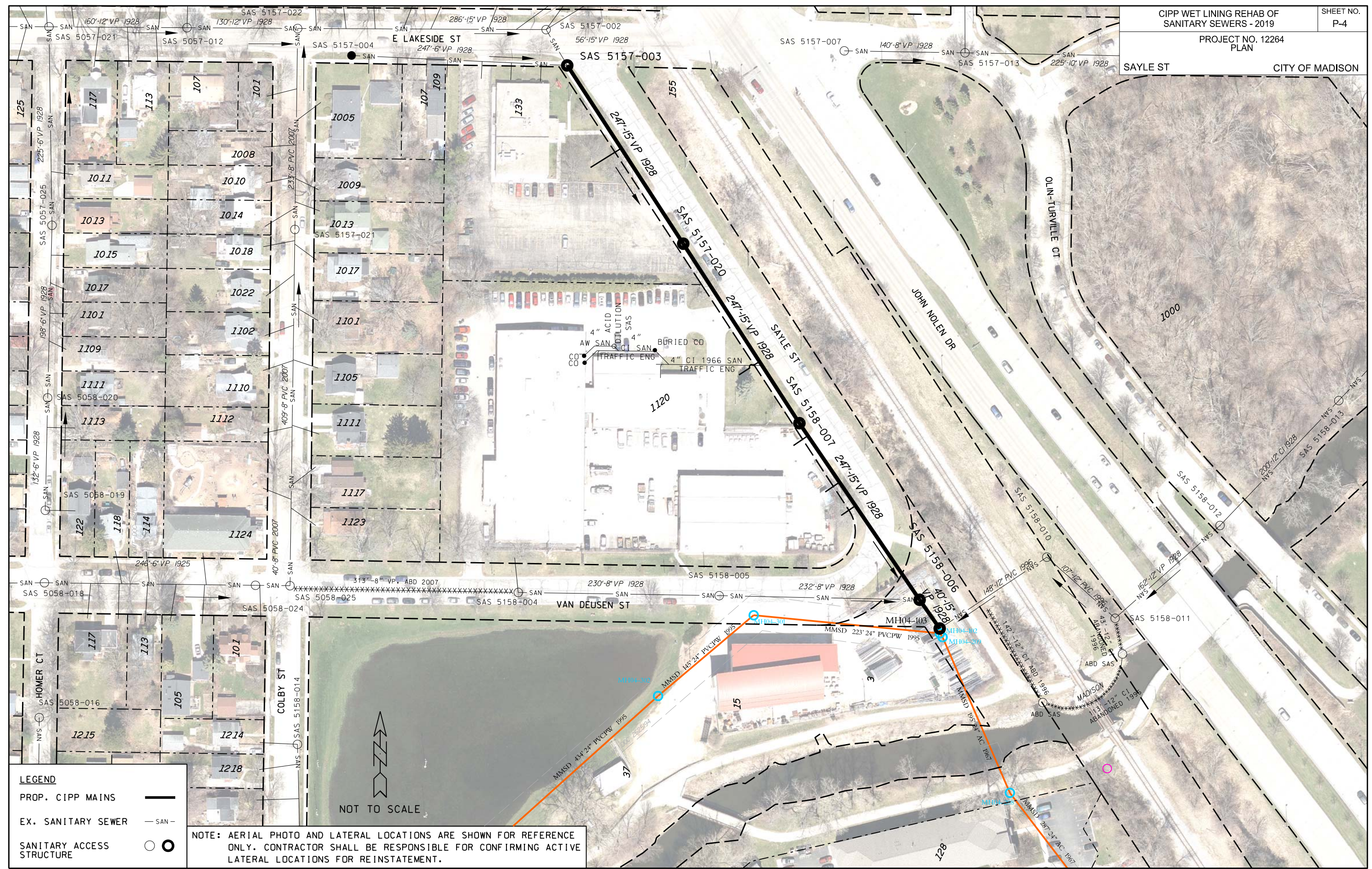
LEGEND

- PROP. CIPP MAINS
- EX. SANITARY SEWER
- SANITARY ACCESS STRUCTURE

NOTE: AERIAL PHOTO AND LATERAL LOCATIONS ARE SHOWN FOR REFERENCE ONLY. CONTRACTOR SHALL BE RESPONSIBLE FOR CONFIRMING ACTIVE LATERAL LOCATIONS FOR REINSTATEMENT.

NOT TO SCALE





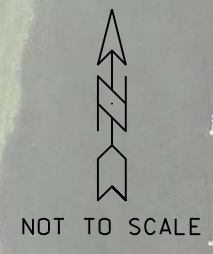
**LEGEND**

PROP. CIPP MAINS ———

EX. SANITARY SEWER — SAN —

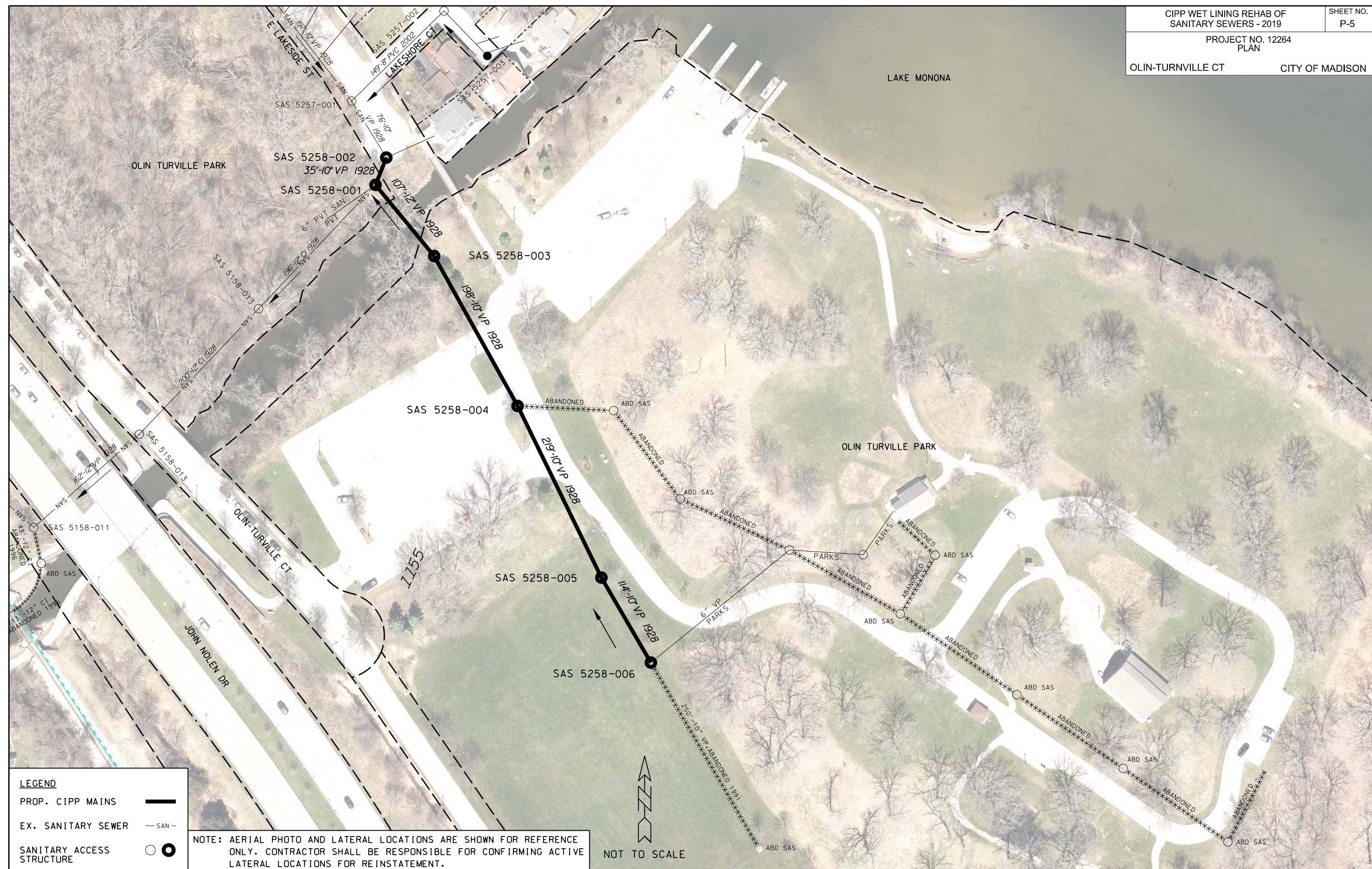
SANITARY ACCESS STRUCTURE ○ ●

NOTE: AERIAL PHOTO AND LATERAL LOCATIONS ARE SHOWN FOR REFERENCE ONLY. CONTRACTOR SHALL BE RESPONSIBLE FOR CONFIRMING ACTIVE LATERAL LOCATIONS FOR REINSTATEMENT.



PLOT SCALE:  
 PLOT NAME:  
 REV. DATE:  
 ORIGINATOR: CITY OF MADISON, STREETS DIVISION





**LEGEND**

PROP. CIPP MAINS ———

EX. SANITARY SEWER — SAN —

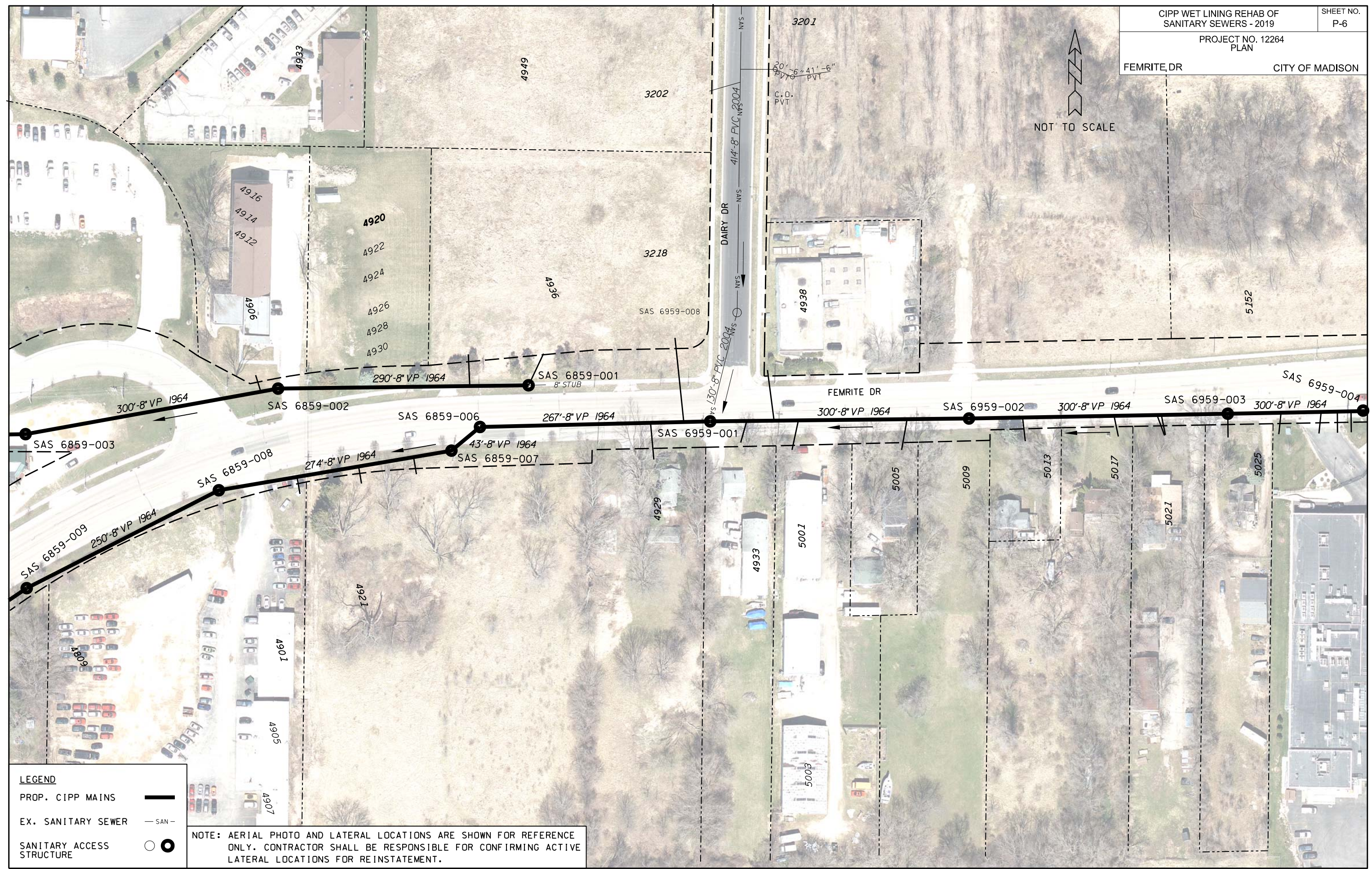
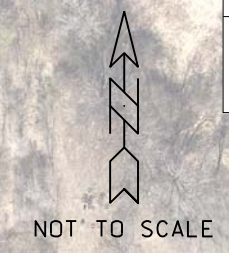
SANITARY ACCESS STRUCTURE ○ ●

NOTE: AERIAL PHOTO AND LATERAL LOCATIONS ARE SHOWN FOR REFERENCE ONLY. CONTRACTOR SHALL BE RESPONSIBLE FOR CONFIRMING ACTIVE LATERAL LOCATIONS FOR REINSTATEMENT.



PLOT SCALE:  
 PLOT NAME:  
 REV. DATE:  
 ORIGINATOR: CITY OF MADISON, STREETS DIVISION





**LEGEND**

PROP. CIPP MAINS	
EX. SANITARY SEWER	
SANITARY ACCESS STRUCTURE	

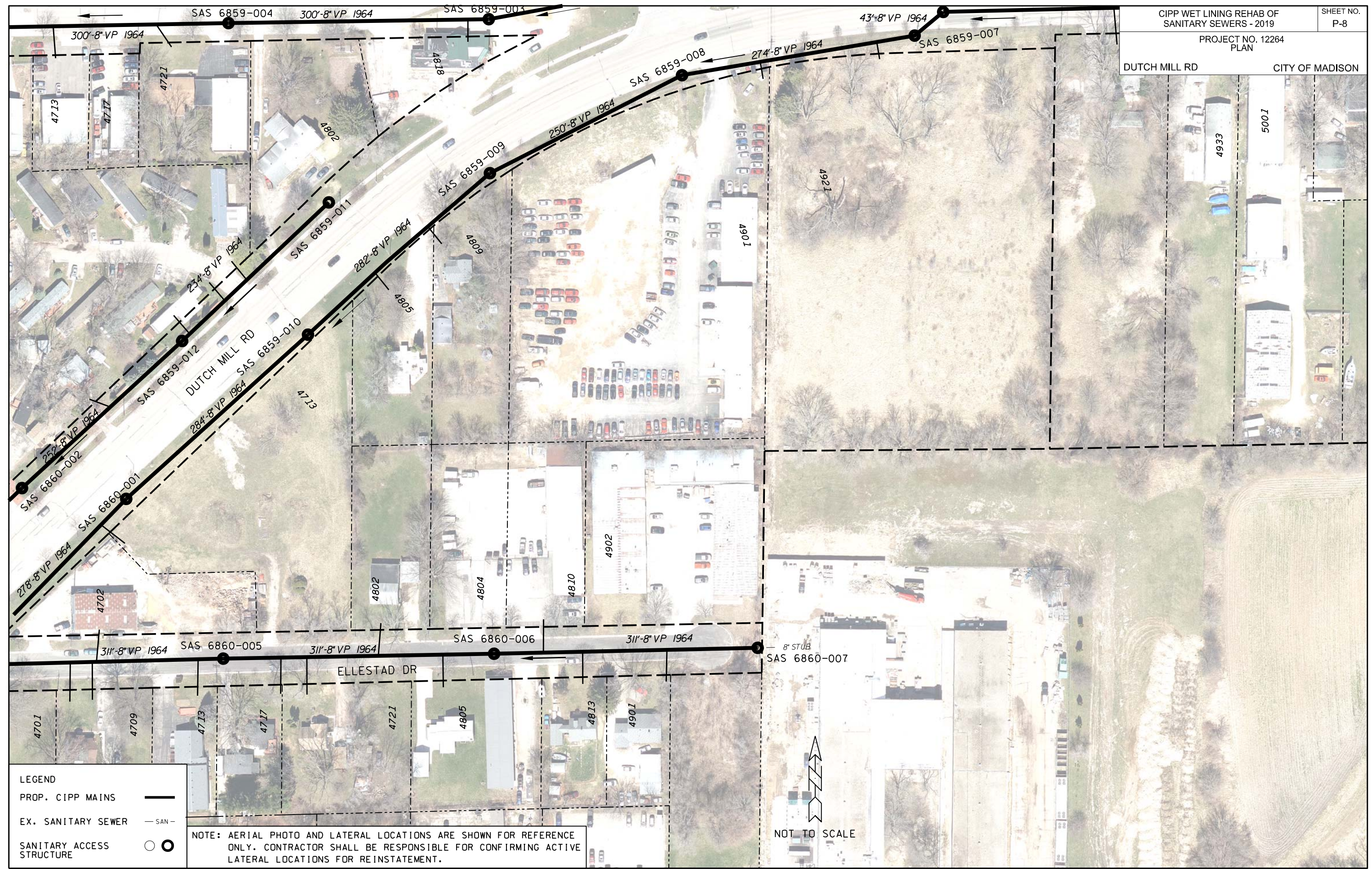
NOTE: AERIAL PHOTO AND LATERAL LOCATIONS ARE SHOWN FOR REFERENCE ONLY. CONTRACTOR SHALL BE RESPONSIBLE FOR CONFIRMING ACTIVE LATERAL LOCATIONS FOR REINSTATEMENT.

PLOT SCALE:  
 PLOT NAME:  
 REV. DATE:  
 ORIGINATOR: CITY OF MADISON, STREETS DIVISION









PLOT SCALE:

PLOT NAME:

REV. DATE:

ORIGINATOR: CITY OF MADISON, STREETS DIVISION

**LEGEND**

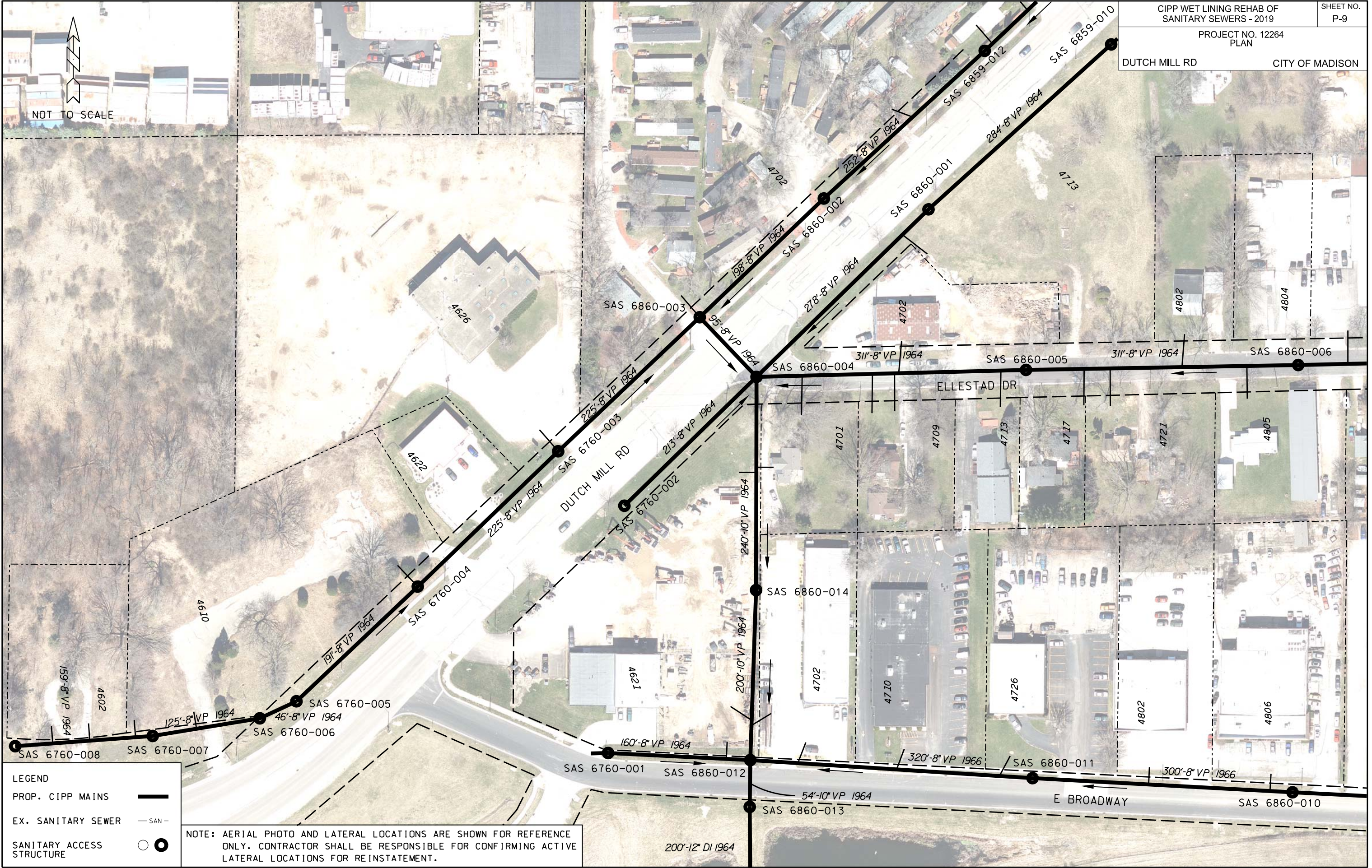
PROP. CIPP MAINS	—
EX. SANITARY SEWER	— SAN —
SANITARY ACCESS STRUCTURE	○ ●

NOTE: AERIAL PHOTO AND LATERAL LOCATIONS ARE SHOWN FOR REFERENCE ONLY. CONTRACTOR SHALL BE RESPONSIBLE FOR CONFIRMING ACTIVE LATERAL LOCATIONS FOR REINSTATEMENT.

8" STUB  
SAS 6860-007

NOT TO SCALE





NOT TO SCALE

PLOT SCALE:

PLOT NAME:

REV. DATE:

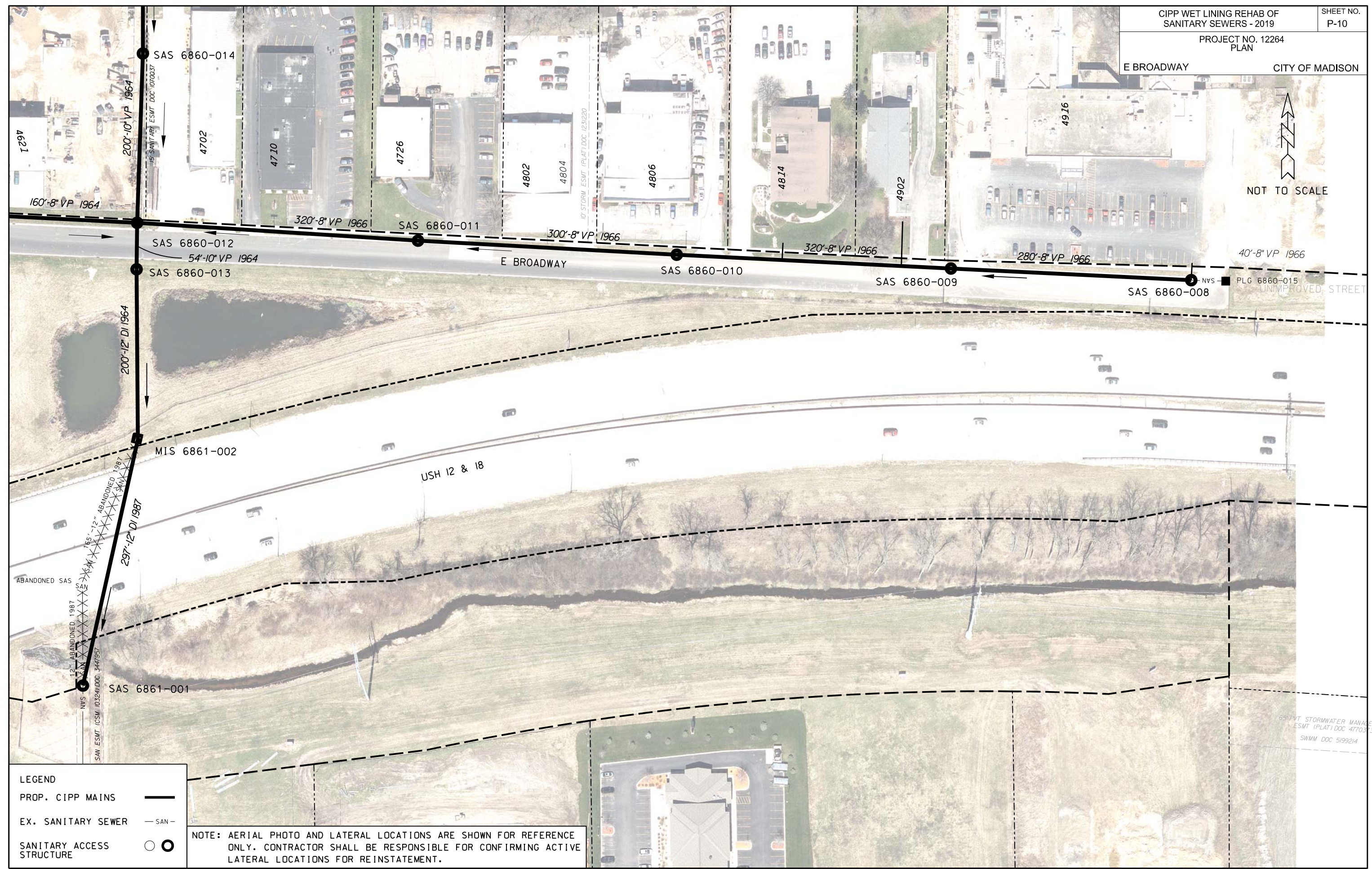
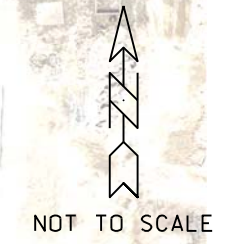
ORIGINATOR: CITY OF MADISON, STREETS DIVISION

LEGEND

PROP. CIPP MAINS	—
EX. SANITARY SEWER	— SAN —
SANITARY ACCESS STRUCTURE	○ ●

NOTE: AERIAL PHOTO AND LATERAL LOCATIONS ARE SHOWN FOR REFERENCE ONLY. CONTRACTOR SHALL BE RESPONSIBLE FOR CONFIRMING ACTIVE LATERAL LOCATIONS FOR REINSTATEMENT.





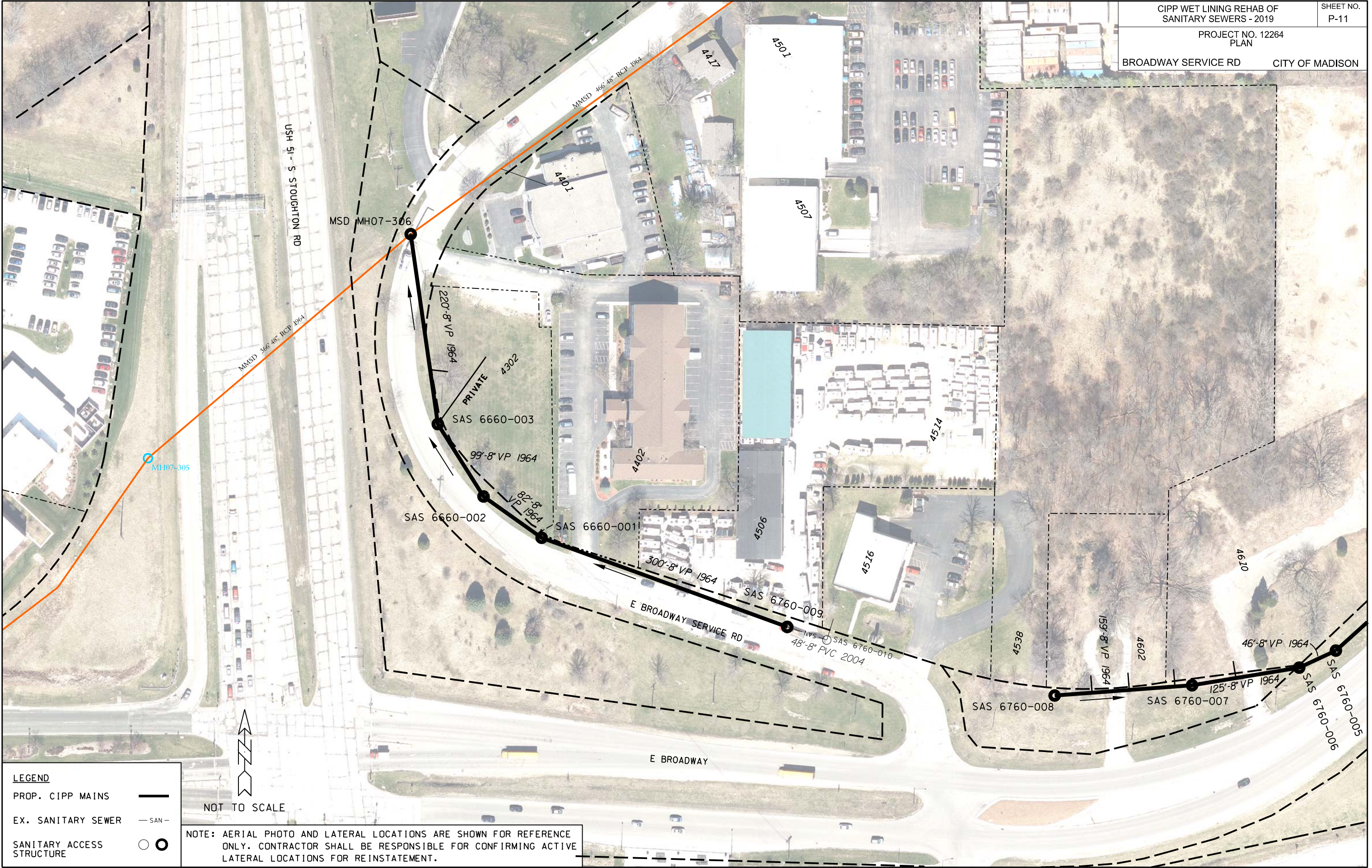
**LEGEND**

PROP. CIPP MAINS	—
EX. SANITARY SEWER	— SAN —
SANITARY ACCESS STRUCTURE	○ ●

NOTE: AERIAL PHOTO AND LATERAL LOCATIONS ARE SHOWN FOR REFERENCE ONLY. CONTRACTOR SHALL BE RESPONSIBLE FOR CONFIRMING ACTIVE LATERAL LOCATIONS FOR REINSTATEMENT.

PLOT SCALE:  
 PLOT NAME:  
 REV. DATE:  
 ORIGINATOR: CITY OF MADISON, STREETS DIVISION





**LEGEND**

PROP. CIPP MAINS ———

EX. SANITARY SEWER — SAN —

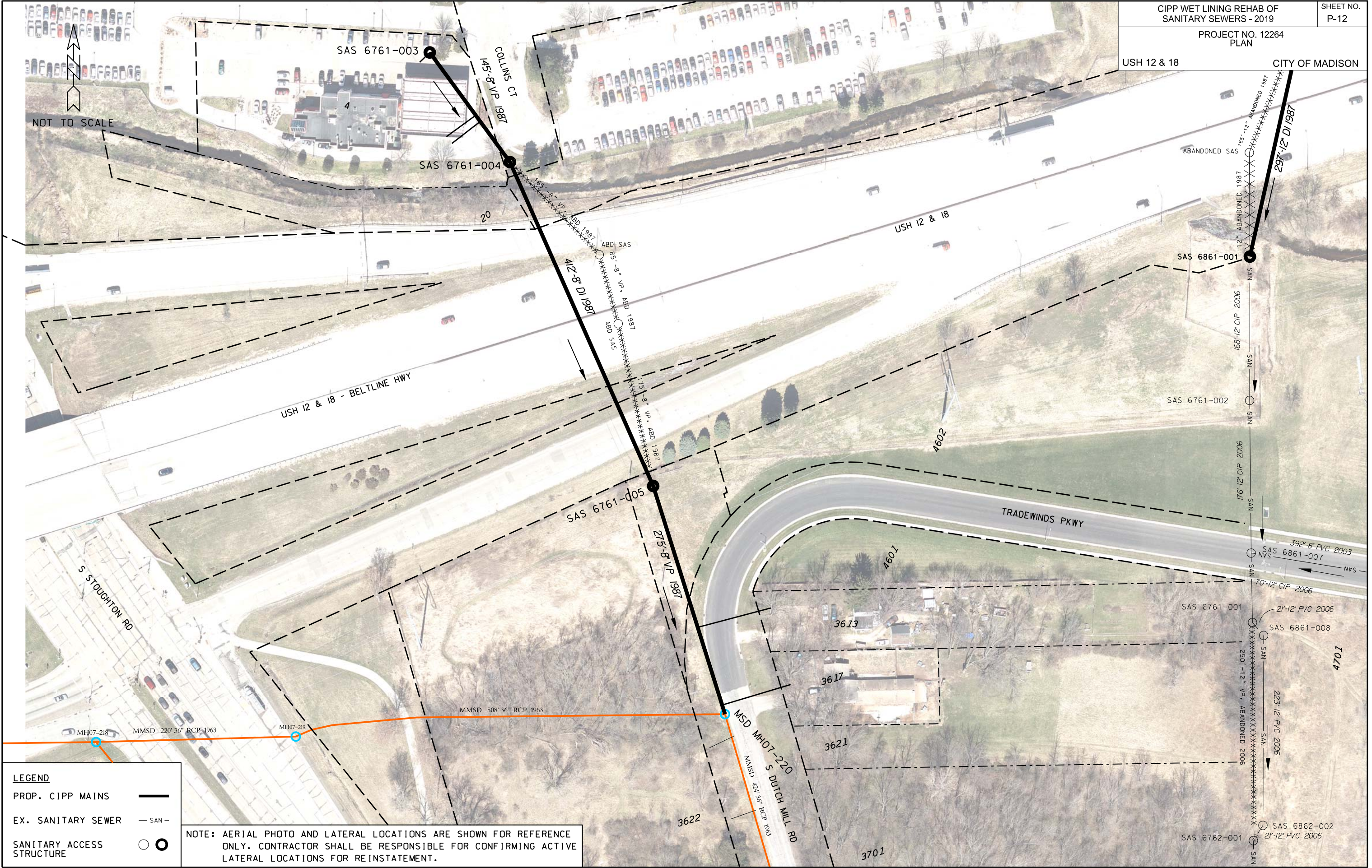
SANITARY ACCESS STRUCTURE ○ ●

NOT TO SCALE

NOTE: AERIAL PHOTO AND LATERAL LOCATIONS ARE SHOWN FOR REFERENCE ONLY. CONTRACTOR SHALL BE RESPONSIBLE FOR CONFIRMING ACTIVE LATERAL LOCATIONS FOR REINSTATEMENT.

PLOT SCALE:  
 PLOT NAME:  
 REV. DATE:  
 ORIGINATOR: CITY OF MADISON, STREETS DIVISION





NOT TO SCALE

PLOT SCALE:

PLOT NAME:

REV. DATE:

ORIGINATOR: CITY OF MADISON, STREETS DIVISION

**LEGEND**

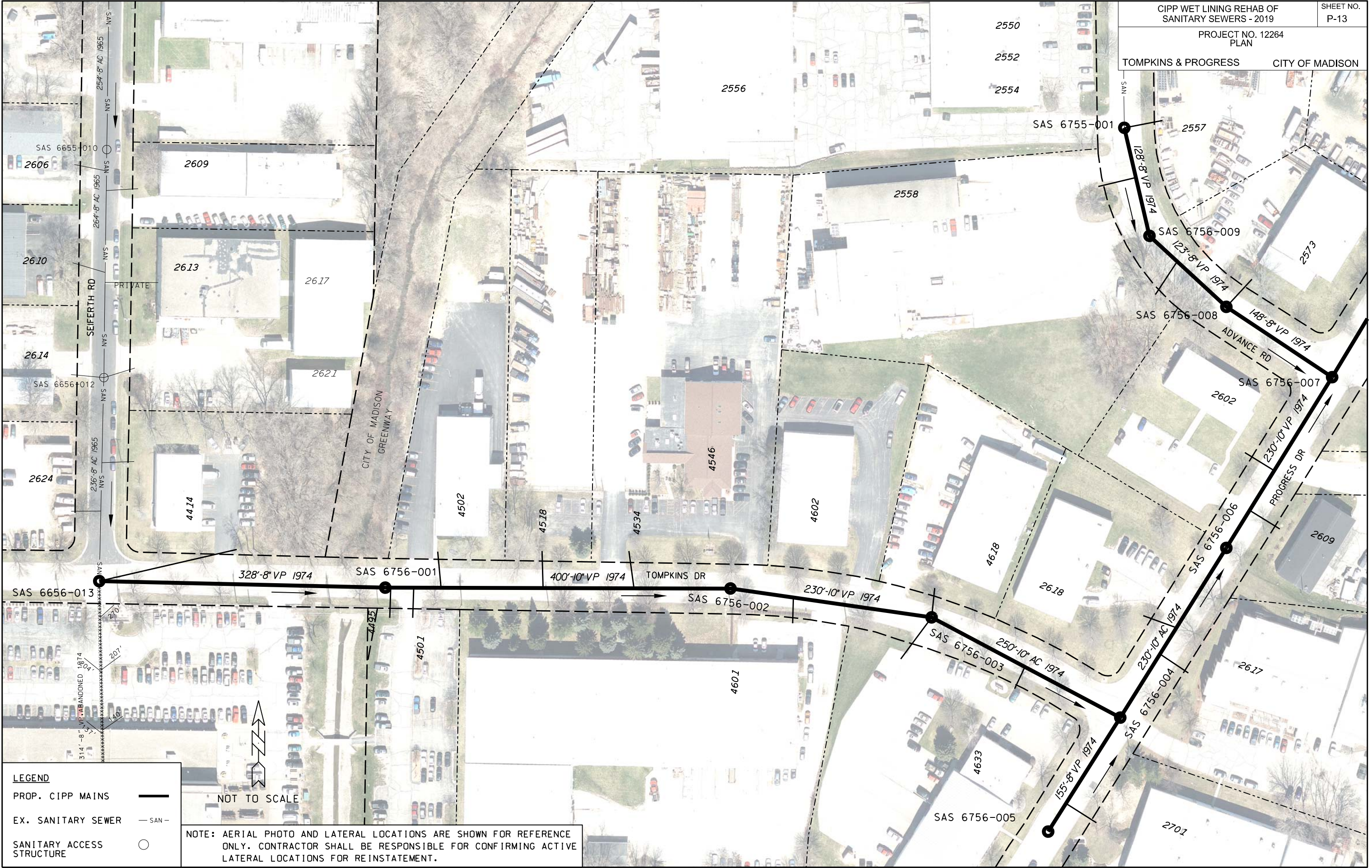
PROP. CIPP MAINS ———

EX. SANITARY SEWER — SAN —

SANITARY ACCESS STRUCTURE ○ ●

NOTE: AERIAL PHOTO AND LATERAL LOCATIONS ARE SHOWN FOR REFERENCE ONLY. CONTRACTOR SHALL BE RESPONSIBLE FOR CONFIRMING ACTIVE LATERAL LOCATIONS FOR REINSTATEMENT.





**LEGEND**

PROP. CIPP MAINS ———

EX. SANITARY SEWER - - - - - SAN - - - - -

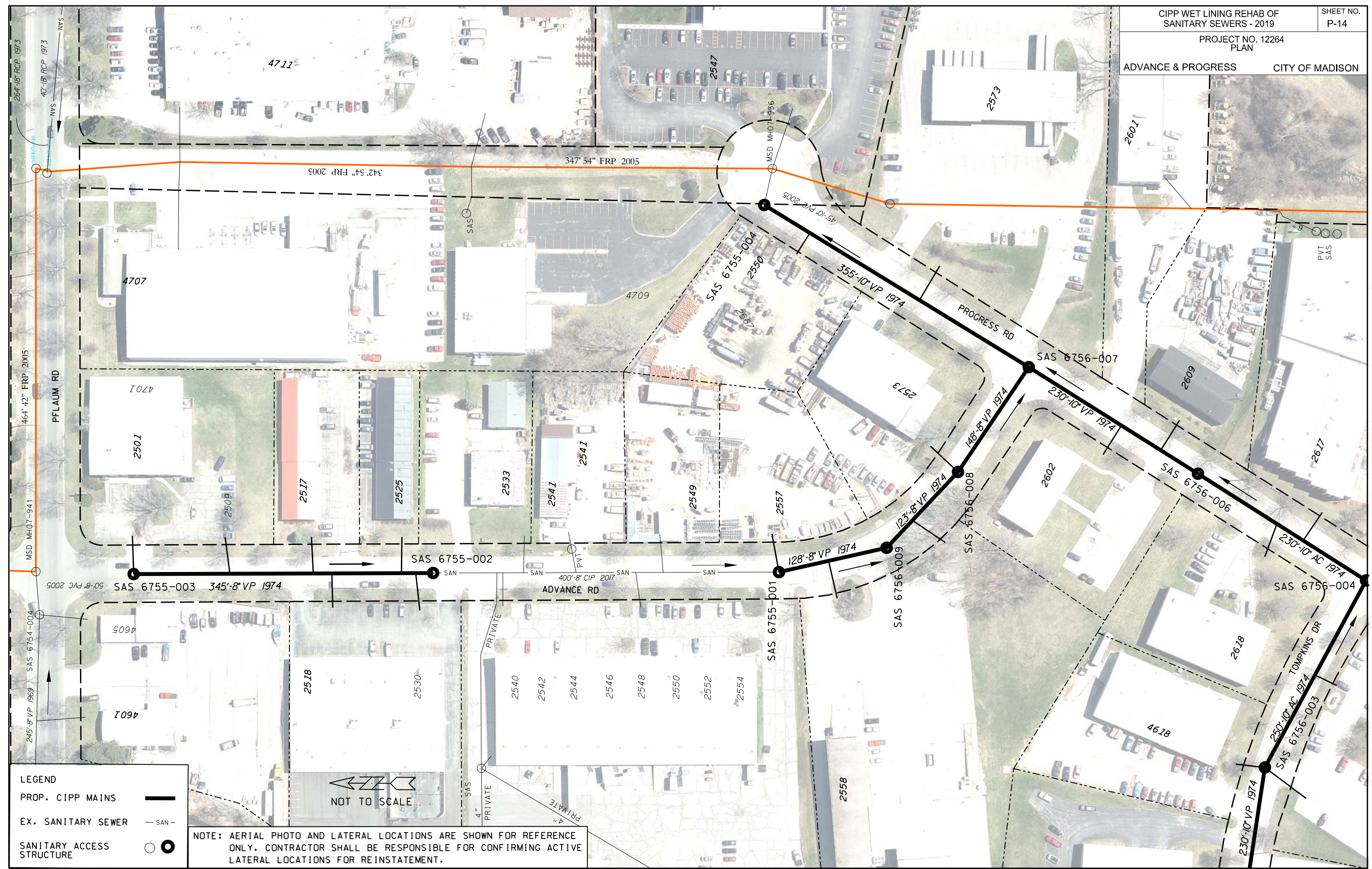
SANITARY ACCESS STRUCTURE ○

NOT TO SCALE

NOTE: AERIAL PHOTO AND LATERAL LOCATIONS ARE SHOWN FOR REFERENCE ONLY. CONTRACTOR SHALL BE RESPONSIBLE FOR CONFIRMING ACTIVE LATERAL LOCATIONS FOR REINSTATEMENT.

PLOT SCALE:  
 PLOT NAME:  
 REV. DATE:  
 ORIGINATOR: CITY OF MADISON, STREETS DIVISION





**LEGEND**

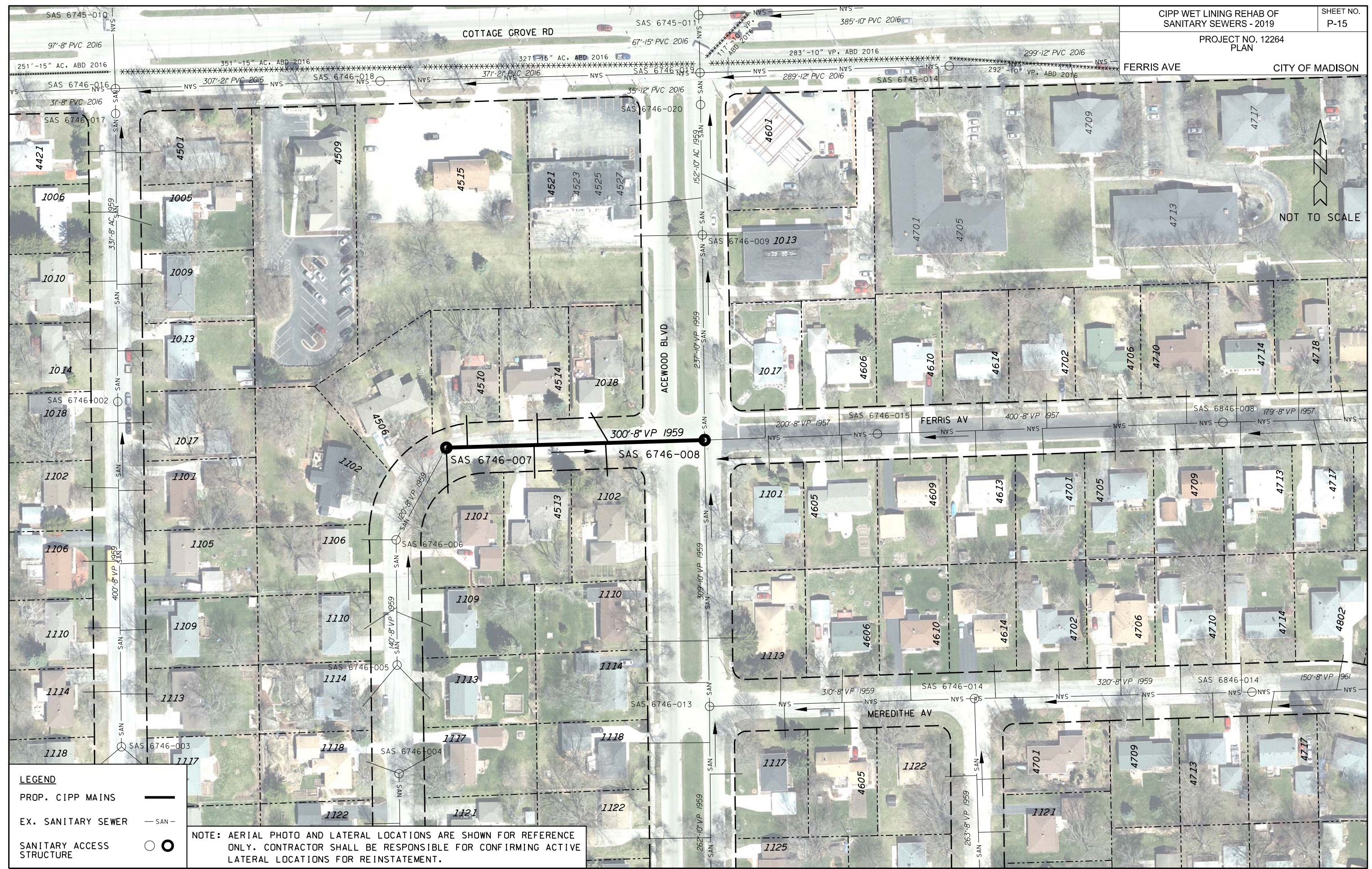
- PROP. CIPP MAINS
- EX. SANITARY SEWER  - SAN -
- SANITARY ACCESS STRUCTURE



NOTE: AERIAL PHOTO AND LATERAL LOCATIONS ARE SHOWN FOR REFERENCE ONLY. CONTRACTOR SHALL BE RESPONSIBLE FOR CONFIRMING ACTIVE LATERAL LOCATIONS FOR REINSTATEMENT.

ORIGINATOR: CITY OF MADISON, STREETS DIVISION  
 REV. DATE:  
 PLOT NAME:  
 PLOT SCALE:





NOT TO SCALE

**LEGEND**

PROP. CIPP MAINS ———

EX. SANITARY SEWER — SAN —

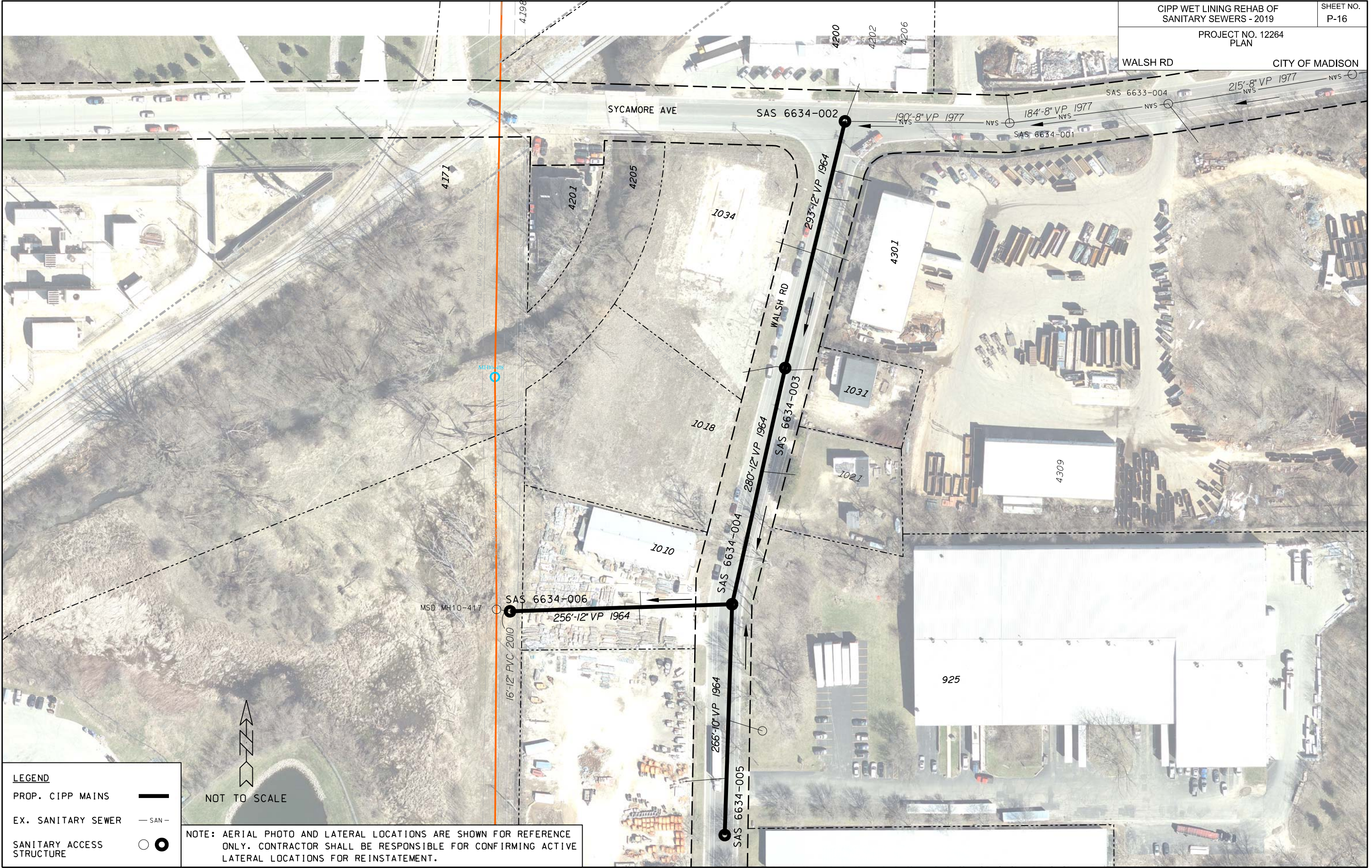
SANITARY ACCESS STRUCTURE ○

NOTE: AERIAL PHOTO AND LATERAL LOCATIONS ARE SHOWN FOR REFERENCE ONLY. CONTRACTOR SHALL BE RESPONSIBLE FOR CONFIRMING ACTIVE LATERAL LOCATIONS FOR REINSTATEMENT.

PLOT SCALE:  
 PLOT NAME:  
 REV. DATE:  
 ORIGINATOR: CITY OF MADISON, STREETS DIVISION



WALSH RD CITY OF MADISON



**LEGEND**

PROP. CIPP MAINS ———

EX. SANITARY SEWER — SAN —

SANITARY ACCESS STRUCTURE ○ ●

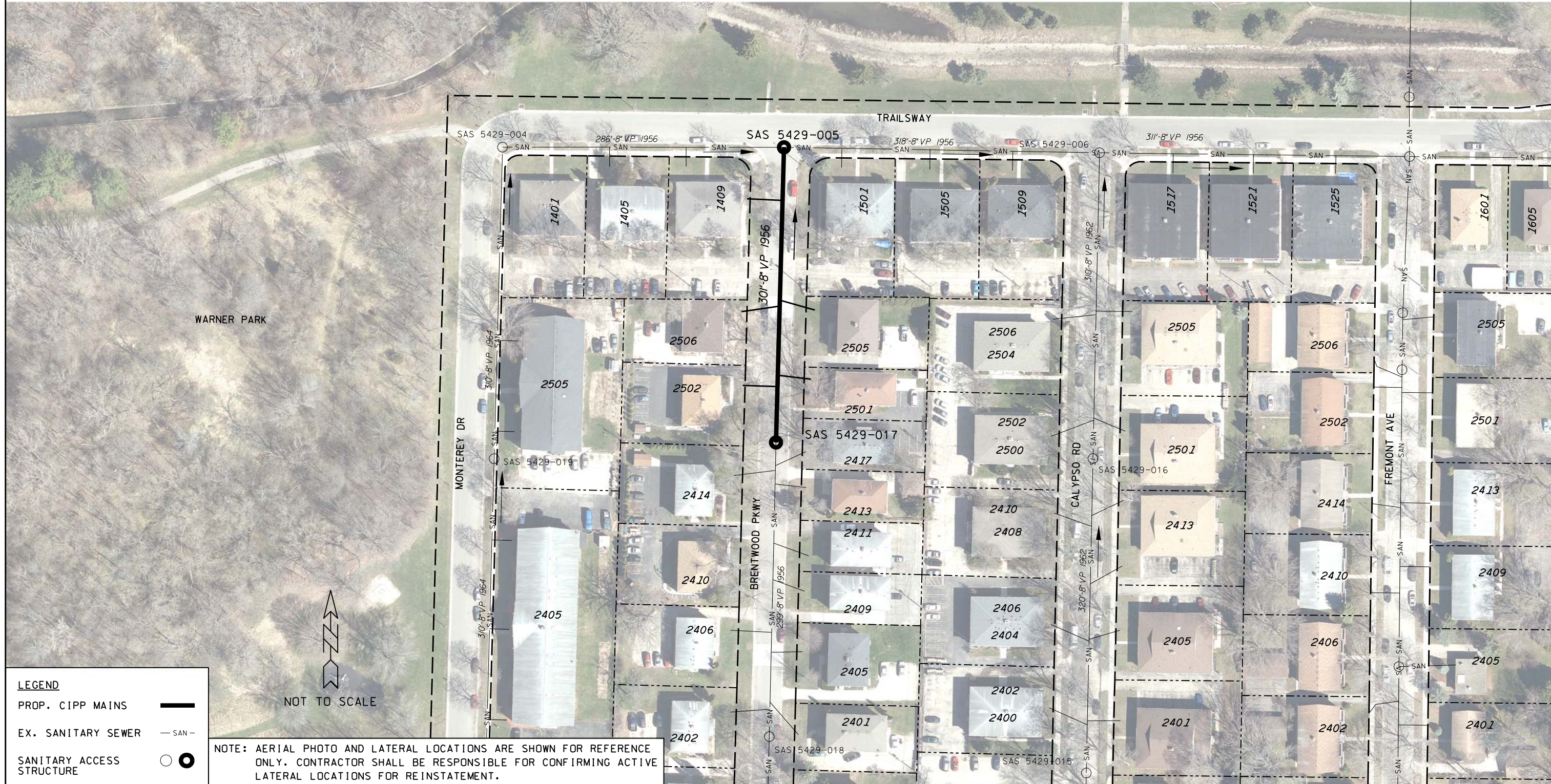
NOT TO SCALE

NOTE: AERIAL PHOTO AND LATERAL LOCATIONS ARE SHOWN FOR REFERENCE ONLY. CONTRACTOR SHALL BE RESPONSIBLE FOR CONFIRMING ACTIVE LATERAL LOCATIONS FOR REINSTATEMENT.

PLOT SCALE:  
 PLOT NAME:  
 REV. DATE:  
 ORIGINATOR: CITY OF MADISON, STREETS DIVISION



WARNER PARK



NOT TO SCALE

LEGEND	
PROP. CIPP MAINS	
EX. SANITARY SEWER	
SANITARY ACCESS STRUCTURE	

NOTE: AERIAL PHOTO AND LATERAL LOCATIONS ARE SHOWN FOR REFERENCE ONLY. CONTRACTOR SHALL BE RESPONSIBLE FOR CONFIRMING ACTIVE LATERAL LOCATIONS FOR REINSTATEMENT.

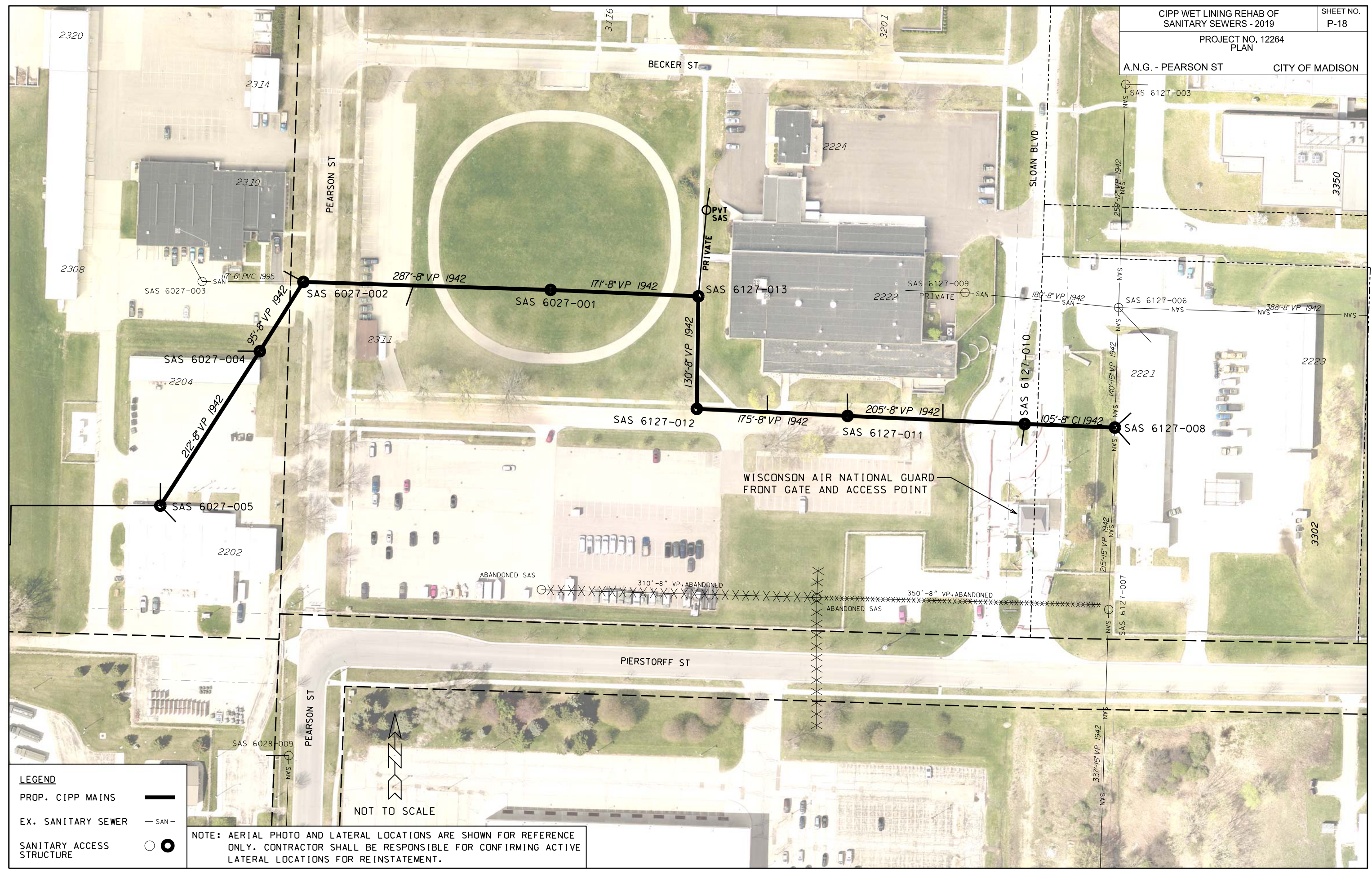
PLOT SCALE:

PLOT NAME:

REV. DATE:

ORIGINATOR: CITY OF MADISON, STREETS DIVISION





**LEGEND**

PROP. CIPP MAINS ———

EX. SANITARY SEWER — SAN —

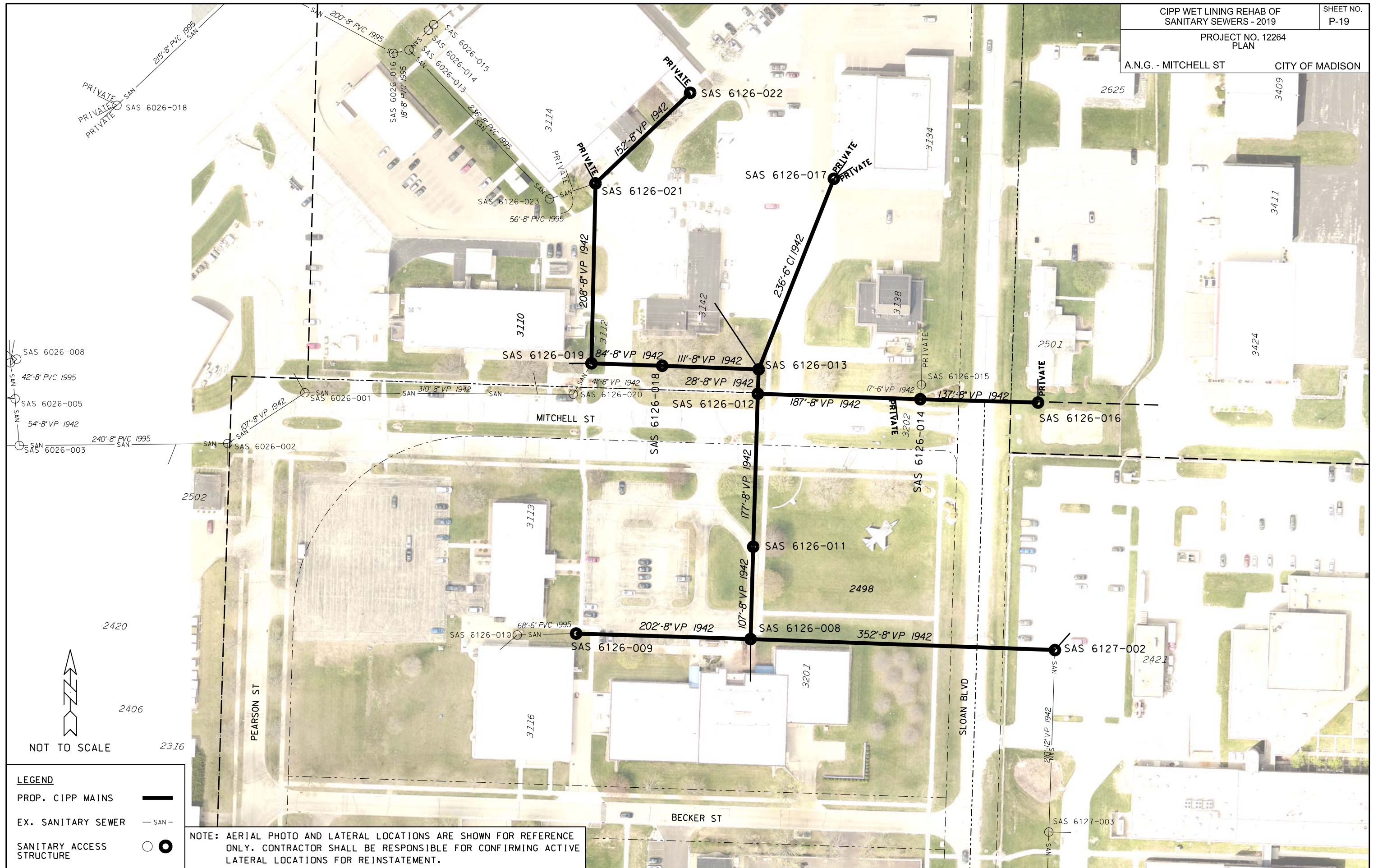
SANITARY ACCESS STRUCTURE ○ ●

NOTE: AERIAL PHOTO AND LATERAL LOCATIONS ARE SHOWN FOR REFERENCE ONLY. CONTRACTOR SHALL BE RESPONSIBLE FOR CONFIRMING ACTIVE LATERAL LOCATIONS FOR REINSTATEMENT.

NOT TO SCALE

PLOT SCALE:  
 PLOT NAME:  
 REV. DATE:  
 ORIGINATOR: CITY OF MADISON, STREETS DIVISION





PLOT SCALE:

PLOT NAME:

REV. DATE:

ORIGINATOR: CITY OF MADISON, STREETS DIVISION



NOT TO SCALE

LEGEND	
PROP. CIPP MAINS	
EX. SANITARY SEWER	
SANITARY ACCESS STRUCTURE	

NOTE: AERIAL PHOTO AND LATERAL LOCATIONS ARE SHOWN FOR REFERENCE ONLY. CONTRACTOR SHALL BE RESPONSIBLE FOR CONFIRMING ACTIVE LATERAL LOCATIONS FOR REINSTATEMENT.



